



## The Digital Testbed Urban Traffic Berlin

In the future, automated driving should function everywhere and anytime. The SAFARI project launches the Digital Testbed Urban Traffic as the step from research to practical application and wide spread adoption. To allow self-driving vehicles to negotiate even complex traffic situations, they require highly accurate and always up-to-date digital HD maps. Dynamic obstacles, such as playing children can already be well recognized with traditional vehicle sensors. However, construction sites that result in the change in roadways still pose a challenge. The sensors of the connected vehicles help in communicating every change without delay.

## Facts and figures

- ▶ 13 traffic lights
- ▶ 6 km main roads
- ▶ 10 km side roads
- ▶ 5.6 million Euros project budget

## Partners



Bezirksamt Reinickendorf von Berlin



## Associated Partner



## Subcontractor



## Contact

hello@testfeld-berlin.de  
www.testfeld-berlin.de

## Funding

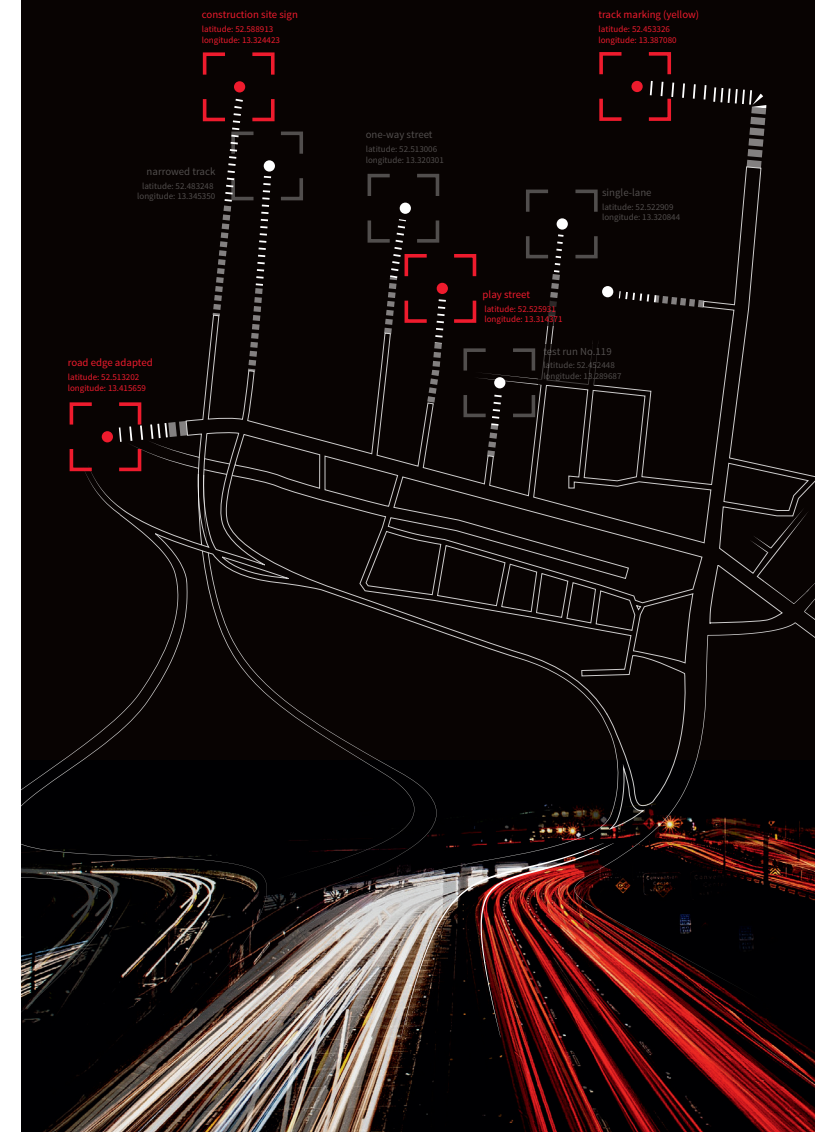
The Safari project is funded by the Federal Ministry for Transport and Digital Infrastructure (BMVI) within the framework of the funding guidelines "Automated and connected driving on digital test beds in Germany".

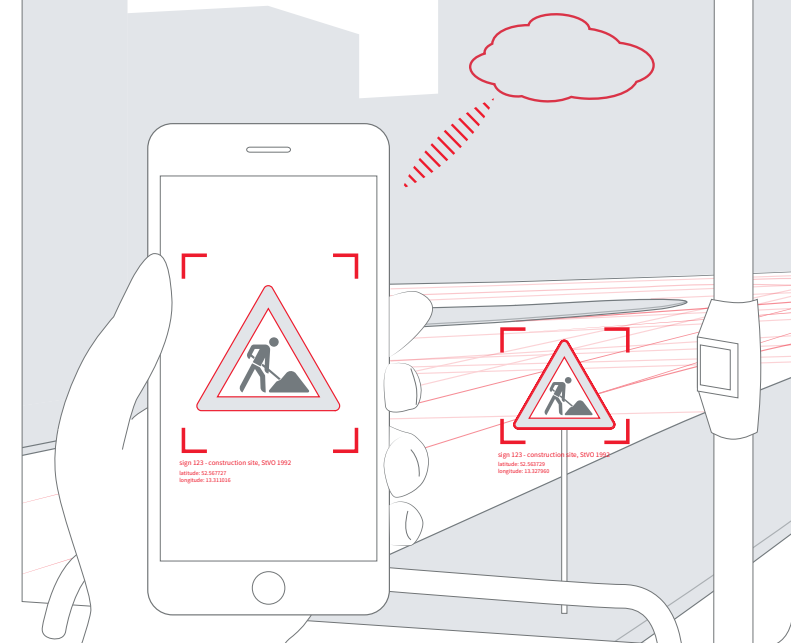


Federal Ministry of Transport and Digital Infrastructure

# SAFARI | DIGITALES TESTFELD STADTVERKEHR

Automated and connected driving in Berlin-Reinickendorf



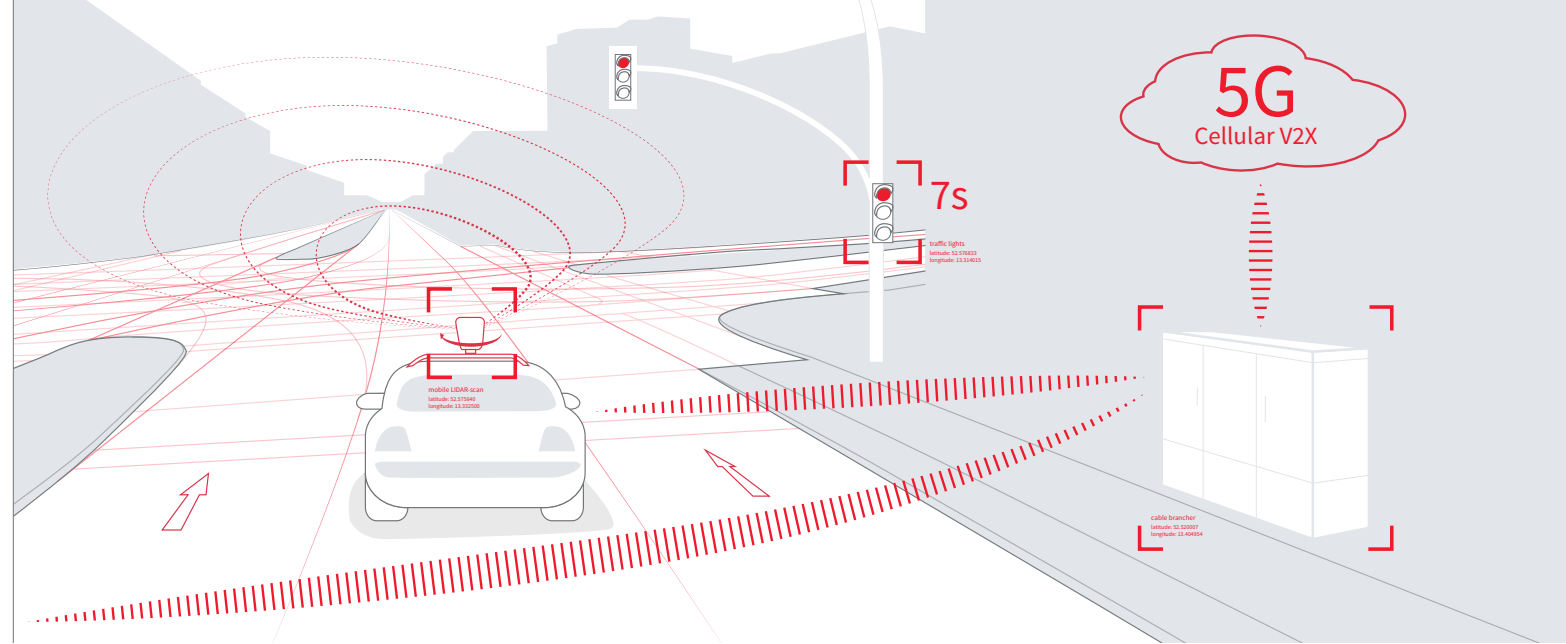


## Objective

In the research project SAFARI, the Land of Berlin together with partners examines the exchange and updating of digital HD maps as a prerequisite for automated and connected driving. In the district Reinickendorf, using highly accurate HD maps, modern infrastructure and a high level of connectivity, three fundamental technologies are being developed and tested: sensory environmental awareness and localization, communicating road infrastructure, and self-updating HD maps.

## Digital traffic management

Highly accurate HD maps are a prerequisite for digitalization of mobility. For the Senate administration for environment, traffic and climate protection these are already an indispensable working basis. Likewise, for years the Berlin universities, research institutions, and companies are researching the fundamentals for automated and connected driving. An important basis for the view and circumspection of the vehicles in traffic is the updating of the maps in real-time. These are not the only overlaps between a modern city and highly automated vehicles. The connectivity between infrastructure and the connected vehicles offers many opportunities for an efficient and safe regulation of traffic.



## What do the vehicles see?

SAFARI uses not only research vehicles but also vehicles retro-fitted with low cost sensor technology and tests the use of smartphones for cost-effective data collection. In the research vehicles, special LIDAR-sensors are integrated, which use laser beams to accurately scan the road and its surroundings. The huge amounts of data acquired thereby can be processed and sent to the cloud without delay thanks to modern low-latency communication technology. As privacy is a major concern, the data is anonymized such that no individual movement profiles can be derived.

## Updating maps

On the basis of the data collected, changes in the road space and driving trajectories of the vehicles have to be recorded, processed and stored in dynamic maps in order to be able to play them back to other vehicles. This constant feedback enables a continuous self-updating of the map content. Information such as free parking slots at the side of the road or the checking of a recently established construction site is generated nearly incidentally.

## Recognize traffic lights/ understand the surroundings

Based on highly accurate HD maps, the vehicles are able to localize themselves on the road down to centimeters. Classical GNSS-based systems alone have a positioning error of over 10 meters after driving under bridges or urban canyons. Thereby the car would stop on the crossing and not at the traffic light. SAFARI brings together map information – “there should be a traffic light here” – with connected road infrastructure – “traffic light will switch to green in 7s” – and vehicle sensors and thereby enables a safe and comfortable automated drive totally without hectic braking maneuvers.

